







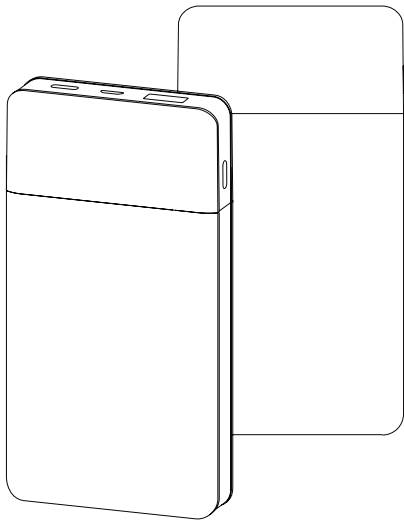






# User Guide

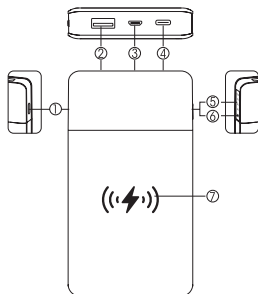
XLayer Powerbank PLUS Wireless 5.000



Thank you for purchasing the XLayer Powerbank PLUS Wireless 5.000 mAh. This powerbank can be widely used for all kinds of electronic devices such as iPhone, iPad or other smartphones.

## Contents

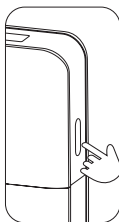
1 Powerbank, 1 USB to Micro-USB Cable, 1 User Guide



- (1) Power On/Off
- (2) USB Output 5V/2.1A
- (3) Micro-USB Input 5V/2.0A
- (4) Type C Input 5V/2.0A
- (5) Capacity LEDs
- (6) Wireless Charging LED
- (7) Wireless Charging Inductive Area

## LED Indicator

Press the Power On/Off Button to check the remaining capacity.







Powerbank battery is low,  
less than 25% remaining.



Powerbank battery is middle,  
less than 50% remaining.



Powerbank battery is good,  
less than 75% remaining.



Powerbank battery is sufficient,  
more than 75% remaining.

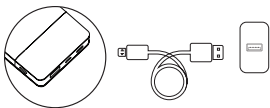
## Product Specification

Battery type:	Lithium Ion
Capacity:	18.5 Wh (3.7V/5.000 mAh)
Micro-USB Input:	5V/2.0A
Type C Input:	5V/2.0A
USB Output:	5V/2.1A
Wireless Output:	5W
Power Display:	4 LED indicators show power level
Size:	132 x 68 x 14 mm
Weight:	152 g

## How to charge the powerbank

We recommend that you fully charge the powerbank before each use. To charge your powerbank use one of the following two charging options:

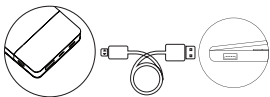
### 1. Charge with a power adapter with USB:



Connect the powerbank to power adapter USB port (not included) with the supplied USB to Micro-USB cable directly. Or connect the powerbank

to power adapter Type C port with a Type C to Type C cable (not included).

### 2. Charge with a free USB port on your computer:



Connect the powerbank to a free USB port on a computer with the supplied USB to Micro-USB cable directly. Or connect the powerbank

to a free Type C port on a computer with a Type C to Type C cable (not included).

## Compatibility

The powerbank is compatible with all Qi-enabled smartphones, tablets and other USB powered devices with 5V charging input.

The powerbank will automatically shut off a few seconds after finishing charging.

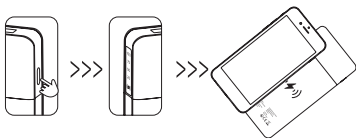
Pull the cable from the mobile device after finishing charging.

# How to charge other devices

## Charging a Qi-enabled device on the powerbank

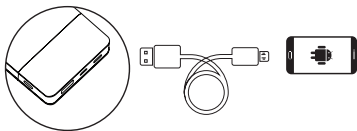
Press the power button on the left side until you see the wireless charging LED light up in RED. Place down the Qi-enabled device on the backside where you can see a wireless charging icon.

- The LED light will light BLUE during charging.
- The LED light will be RED after charging.



## Charging with a cable

Connect the device to the powerbank with a USB to Micro-USB cable or a USB to Type C cable. The capacity LED on the display will light up and one of the LEDs will be blinking during charging. The powerbank would automatically shut off in a few seconds after finishing charging.



## Safety Notice

- Fully charge the powerbank once before first use.
- Use the included cable to charge the powerbank.
- In order to ensure the durability of the battery during irregular use, charge the powerbank once every three months.

- Charging by unsupervised, short circuit or mechanical damage would cause overheating and fire.
- Do not immerse the product in water or other liquids.
- Handle the product carefully. shocks, vibrations or fall from a low height can damage the product.
- If liquid is leaking, stop using the device.
- A remodeling or modification of the product would affect the safety.  
Risk of injury!
- Don't open the appliance without proper authorization and don't perform repairs yourself!
- Please keep the product away from children.
- Modifications and mistakes reserved.



This Electrical device does not belong in the garbage. For proper disposal, please contact the public collection in your community.

Please note: we don't accept liability for any damages on connected devices. Please check compatibility of our product with the manufacturer of your device before use.

Gaudio herewith explains that the device XLayer **Powerbank PLUS Wireless 5.000 mAh** is in accordance with all relevant requirements and guidelines. The declaration of conformity can be found under the following address or simply contact us under [service@xlayer.de](mailto:service@xlayer.de).  
[www.gaudio.de/ke/214429.pdf](http://www.gaudio.de/ke/214429.pdf)